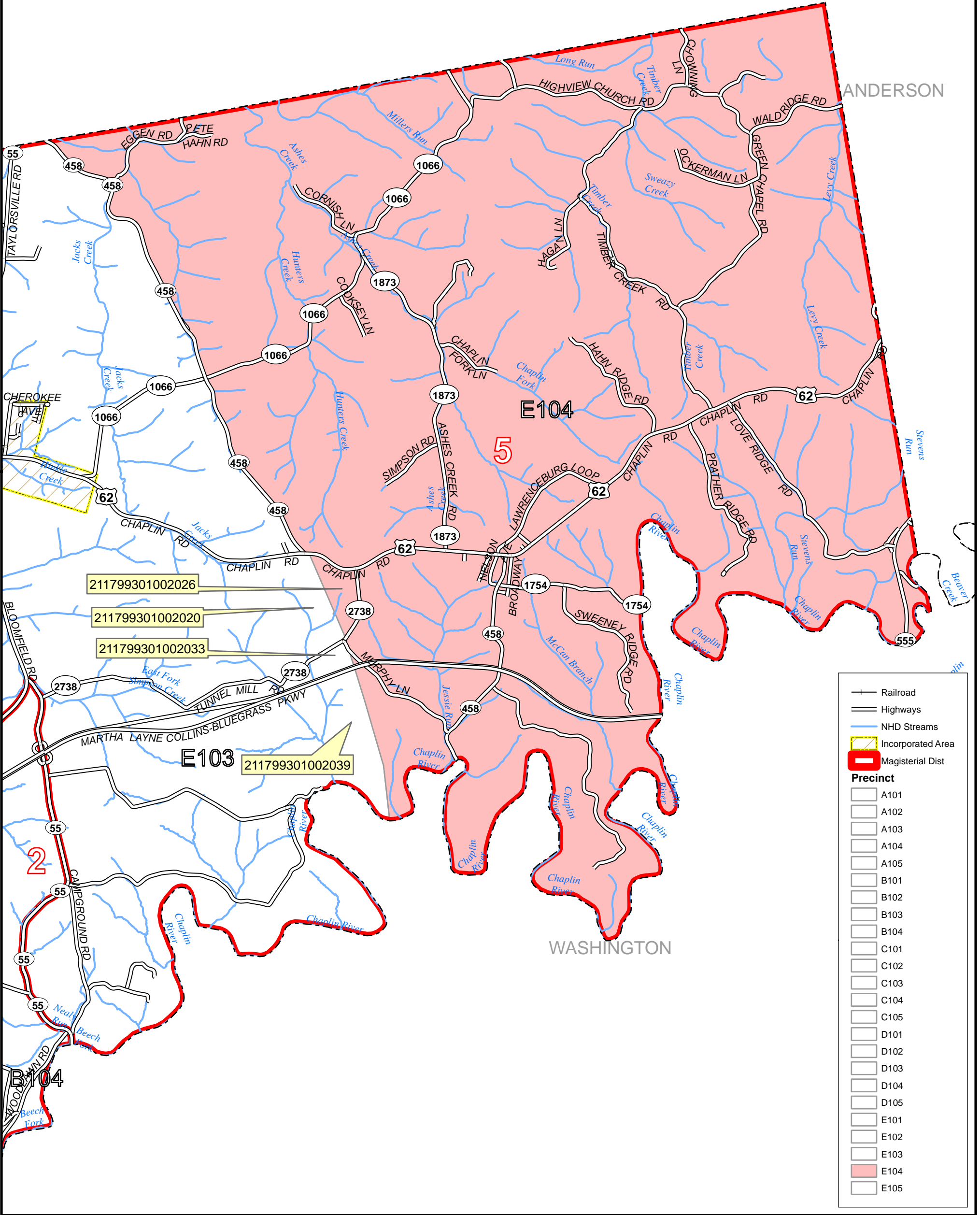


SPENCER

ANDERSON

WASHINGTON

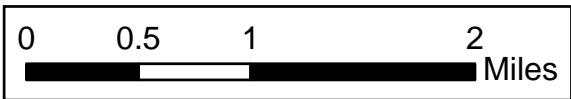


- 211799301002026
- 211799301002020
- 211799301002033
- 211799301002039

+ Railroad
 — Highways
 — NHD Streams
 Incorporated Area
 Magisterial Dist

Precinct

- A101
- A102
- A103
- A104
- A105
- B101
- B102
- B103
- B104
- C101
- C102
- C103
- C104
- C105
- D101
- D102
- D103
- D104
- D105
- E101
- E102
- E103
- E104**
- E105



Precinct **A101** Magisterial District **5** 96011234

NELSON COUNTY
Precinct Boundaries
Version 17 March 2014

E104